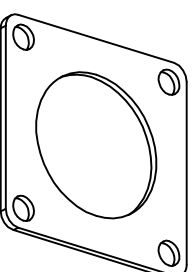
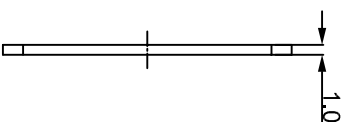
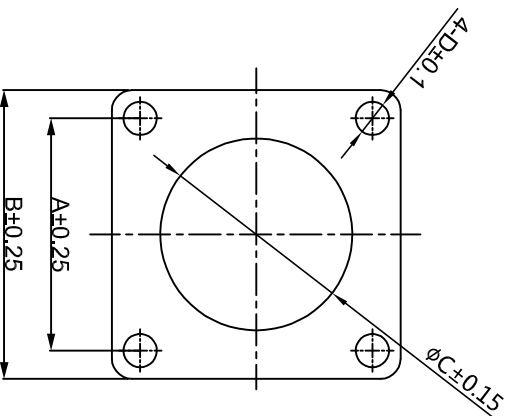


REVISIONS				
REV	ECO	DESCRIPTION	DATE	BY APPR
B1	-	RELEASED DRAWING	JAN-18-2014	ARROW TOMMY
B2	-	UPDATE DRAWING	APR-18-2017	FLAN TOMMY
B3	-	UPDATE DRAWING	May-19-17	Regan Tommy
B4	-	UPDATE TOLERANCE OF "D"	Jul/25/17	Tommy
B5	-	ADD PART NO. OF #8	May-8-2018	Flan Tommy



- NOTES:
1. MATERIAL : EPDM(BLACK). U194 V-0
  2. SEALING FOR WALL MOUNTING RECEPTACLES.
  3. SUITABLE FOR RTG-RT0-RT0W-RT50.

PART NO:	SHELL	A	B	C	D
RTFD088	08	15.3	20.6	12.0	3.2
RTFD108	10	18.3	23.8	15.1	3.3
RTFD128	12	20.6	26.8	19.1	3.3
RTFD148	14	23.0	28.6	22.2	3.3
RTFD168	16	24.6	31.0	25.4	3.3
RTFD188	18	27.0	33.3	28.6	3.3
RTFD208	20	29.4	36.5	31.8	4.3
RTFD228	22	31.8	39.4	35.1	3.3
RTFD248	24	34.9	42.5	38.1	4.3

QUANTITY	PART NUMBER	DESCRIPTION	ITEM
<b>MATERIALS LIST</b>			

UNLESS OTHERWISE SPECIFIED		SIGNATURES		DATE	
1) All dimensions are in millimeters.	2) Tolerances are as follows:	DRAWN: Flan	DATE: 10/9/2018	CHECKED: 10d	DATE: 10/9/2018
1 Pt. DEC 20.30	Fractions 1/16"	ENGINEER: Tommy	DATE: 10/9/2018	APPROVAL: Tommy	DATE: 10/9/2018
3 Pt. DEC 20.08	Angles 1°	CUSTOMER: Sine Systems			
3) Note reference =					

PROCESS SPECIFICATIONS:		MATERIAL SPECIFICATIONS:		NEXT ASST:	
DRAWING IS SUPERSEDED BY THE LATEST REVISIONS. SPECIFICATIONS AND PERFORMANCE DATA ARE THE PROPERTY OF SINE SYSTEMS. REPRODUCTION OR REUSE OF THIS DRAWING WITHOUT THE WRITTEN PERMISSION OF SINE SYSTEMS IS PROHIBITED. ALL MANUFACTURING VARIATIONS.		MATERIAL SPECIFICATIONS:		NEXT ASST:	
SIZE	TYPE	SCALE	NONE	RTFDXMB	REVISION
B	C-				B5

**Amphenol**

Sine Systems - [www.amphenol-sine.com](http://www.amphenol-sine.com)  
44724 Morley Drive  
Clinton Township, MI 48036

ECO-MATE GASKET  
RT 360 SERIES